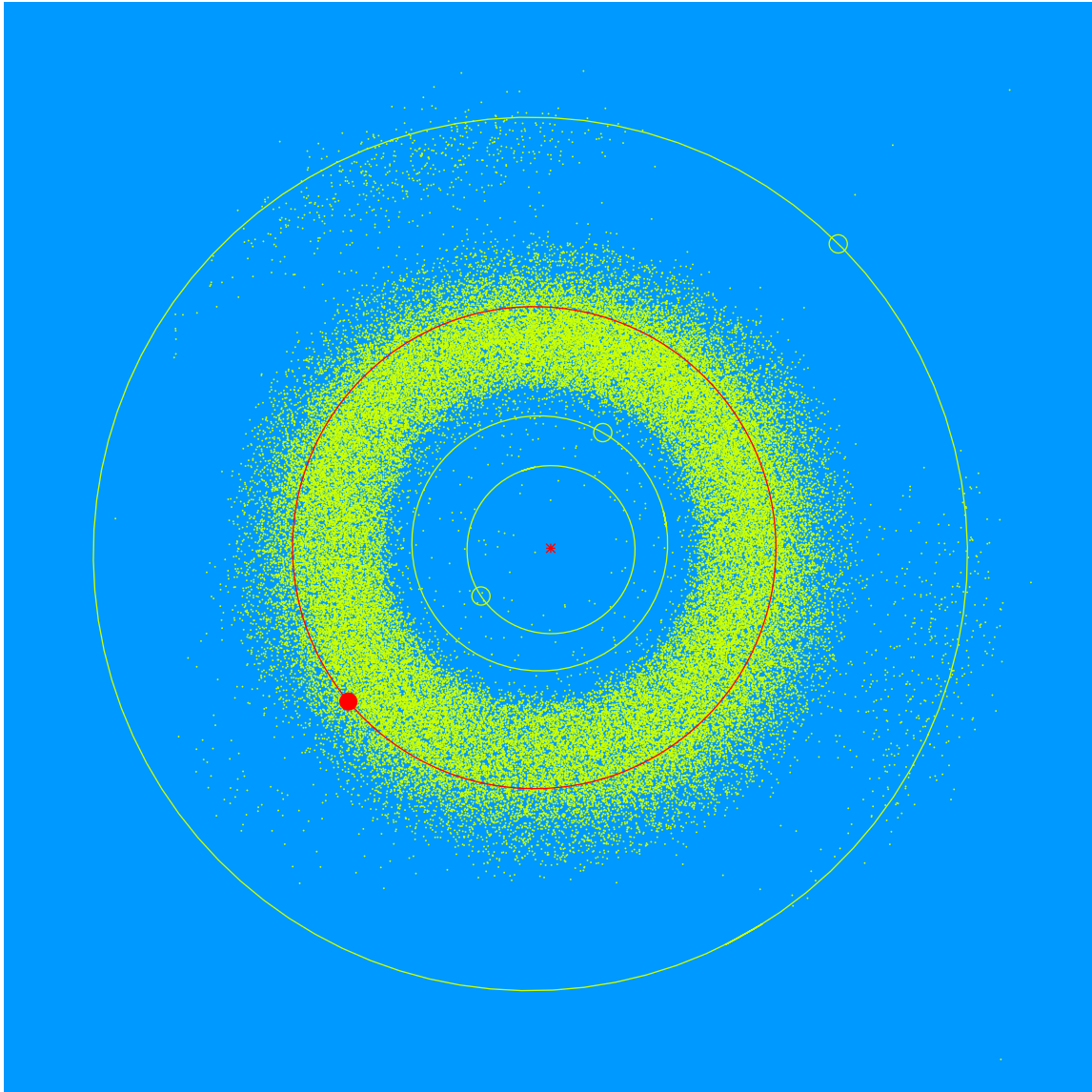


(27521) Josschindler = 2000 HS₂₆

Discovered 2000 Apr. 24 by the Lowell Observatory Near-Earth Object Search at the Anderson Mesa Station.

Jos Schindler (b. 1989) is a Senior Public Program Educator at Lowell Observatory. In that role, they take the Observatory's guests on tours of the historic campus, operate telescopes for the public, and help engage children in science with Lowell Observatory's Camps for Kids.



Semimajor axis	2.88 AU
Eccentricity	0.072
Inclination	2.91 deg
Diameter	3–4 km