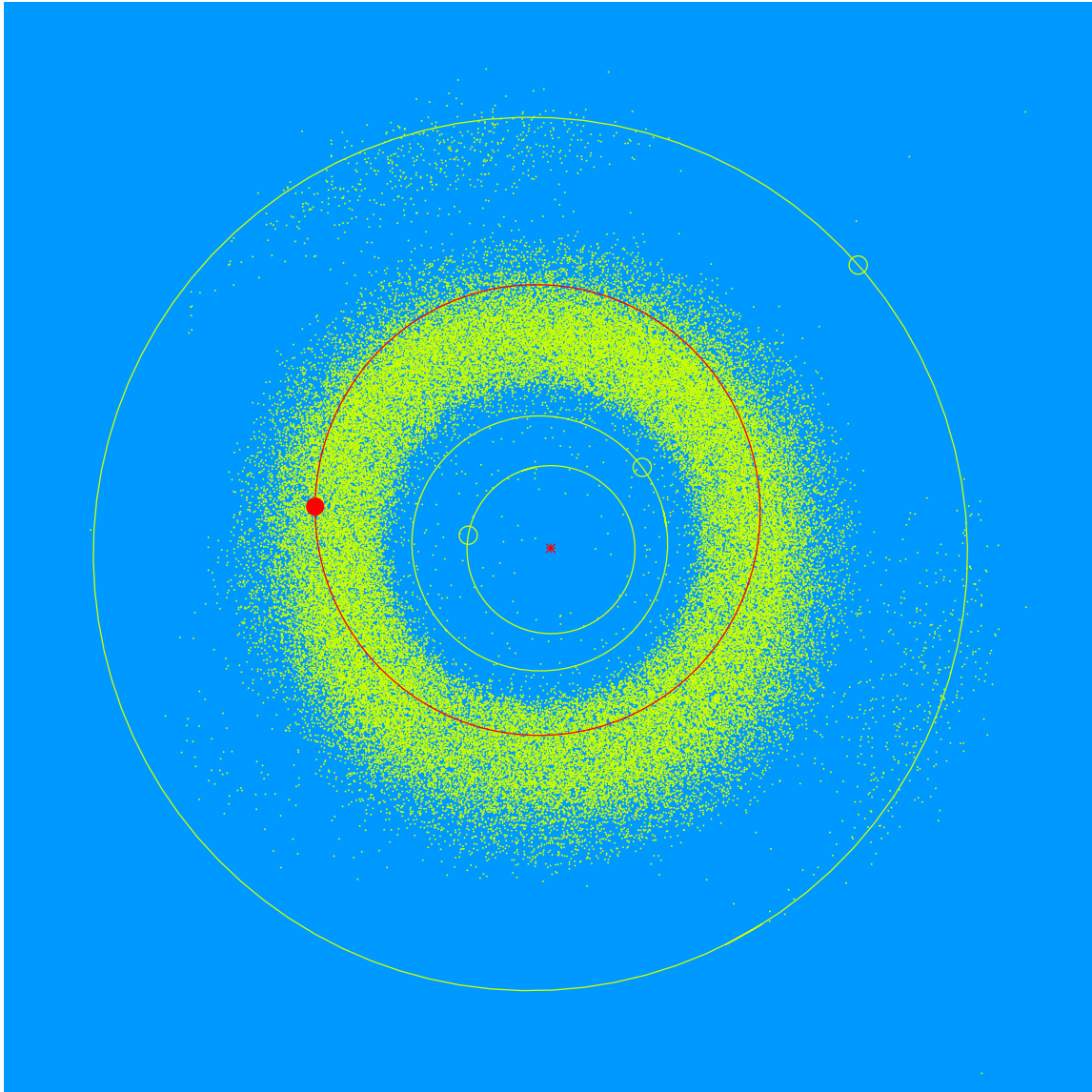


(27408) Kellyferguson = 2000 EJ<sub>125</sub>

Discovered 2000 Mar. 11 by the Lowell Observatory Near-Earth Object Search at the Anderson Mesa Station.

Kelly Ferguson (b. 1991) is the Education Coordinator for Lowell Observatory. She is responsible for making science and math accessible for the youngest scientists that pass through the Observatory's doors and is the leader of summer and preschool programs on and off the Lowell campus.



Semimajor axis	2.69 AU
Eccentricity	0.179
Inclination	4.63 deg
Diameter	3–4 km