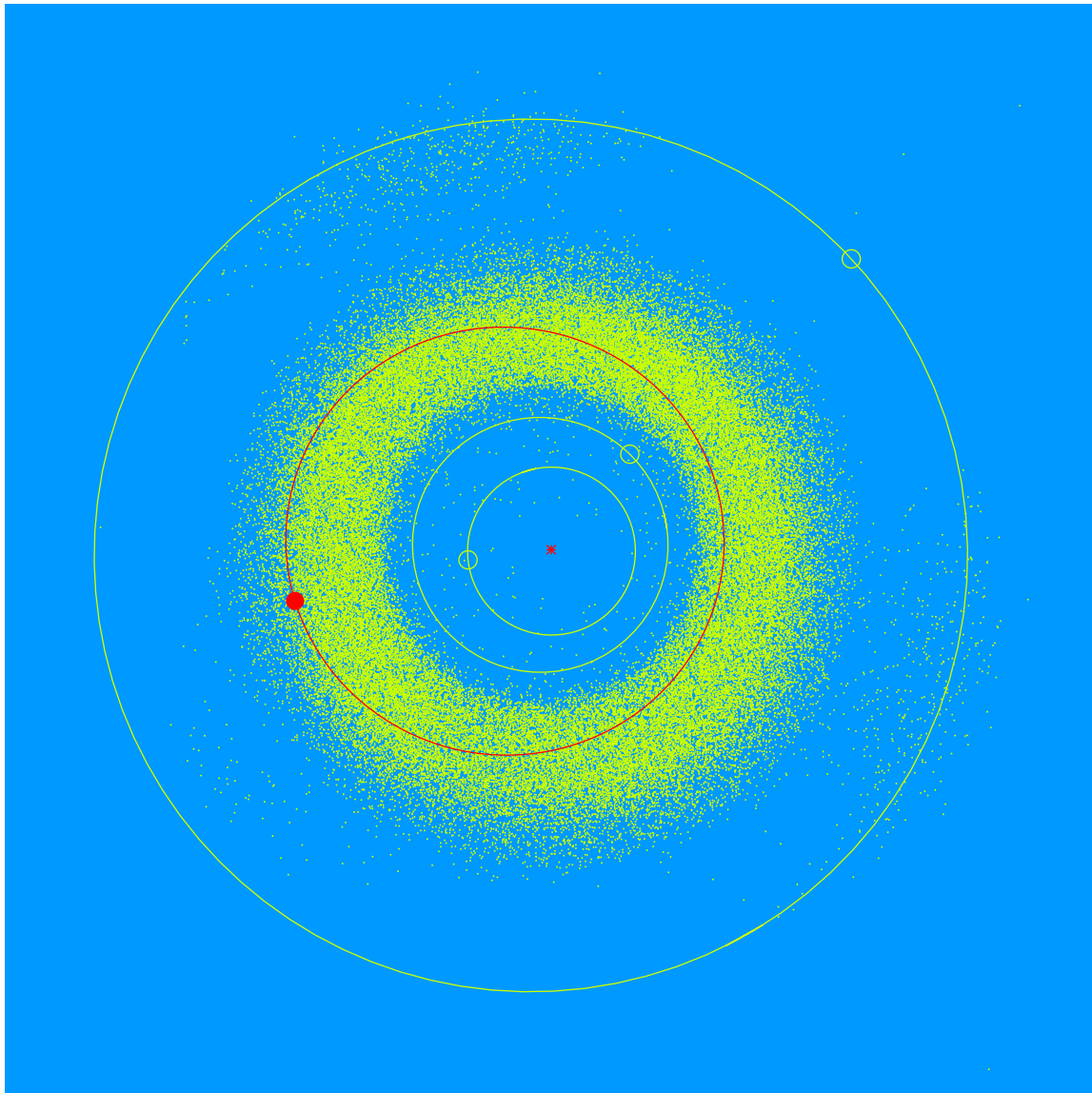


**(27432) Kevinconley = 2000 FO<sub>27</sub>**

Discovered 2000 Mar. 27 by the Lowell Observatory Near-Earth Object Search at the Anderson Mesa Station.

Kevin Conley (b. 1990) is a Public Program Supervisor at Lowell Observatory. He facilitates experiences for guests by leading tours of the historic campus, operating telescopes, teaching the public about astronomy, designing and implementing new programming, and training new educators.



Semimajor axis	2.61 AU
Eccentricity	0.214
Inclination	3.66 deg
Diameter	2–3 km