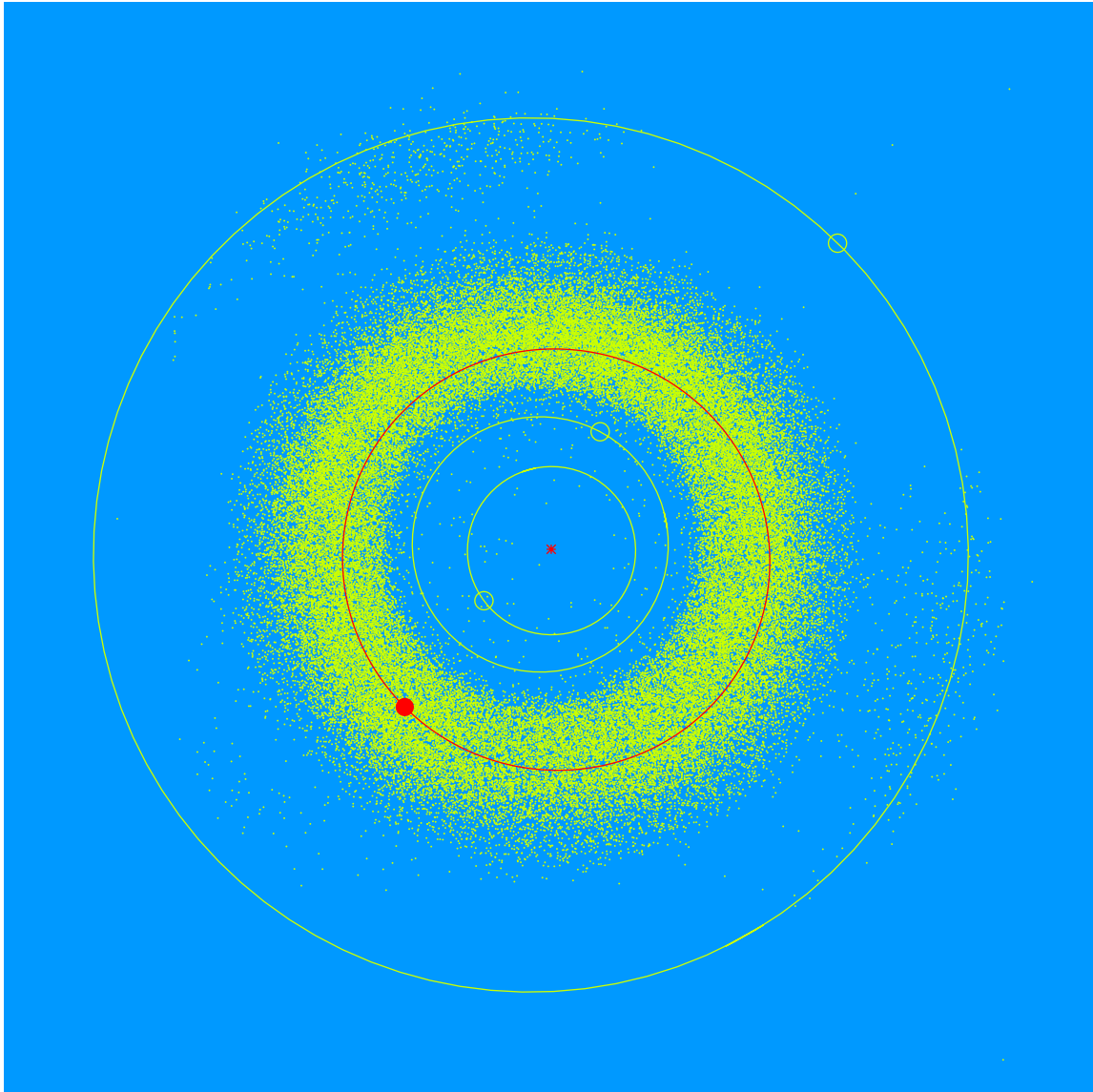


(27540) Kevinwhite = 2000 HA₁₀₀

Discovered 2000 Apr. 27 by the Lowell Observatory Near-Earth Object Search at the Anderson Mesa Station.

Kevin White (b. 1981) is Public Program Supervisor at Lowell Observatory. He is responsible for the day-to-day operations associated with the Observatory's public outreach programs. He also oversees volunteer training and leads regular constellations refreshers for the education staff and volunteers.



Semimajor axis	2.54 AU
Eccentricity	0.054
Inclination	10.44 deg
Diameter	2–3 km