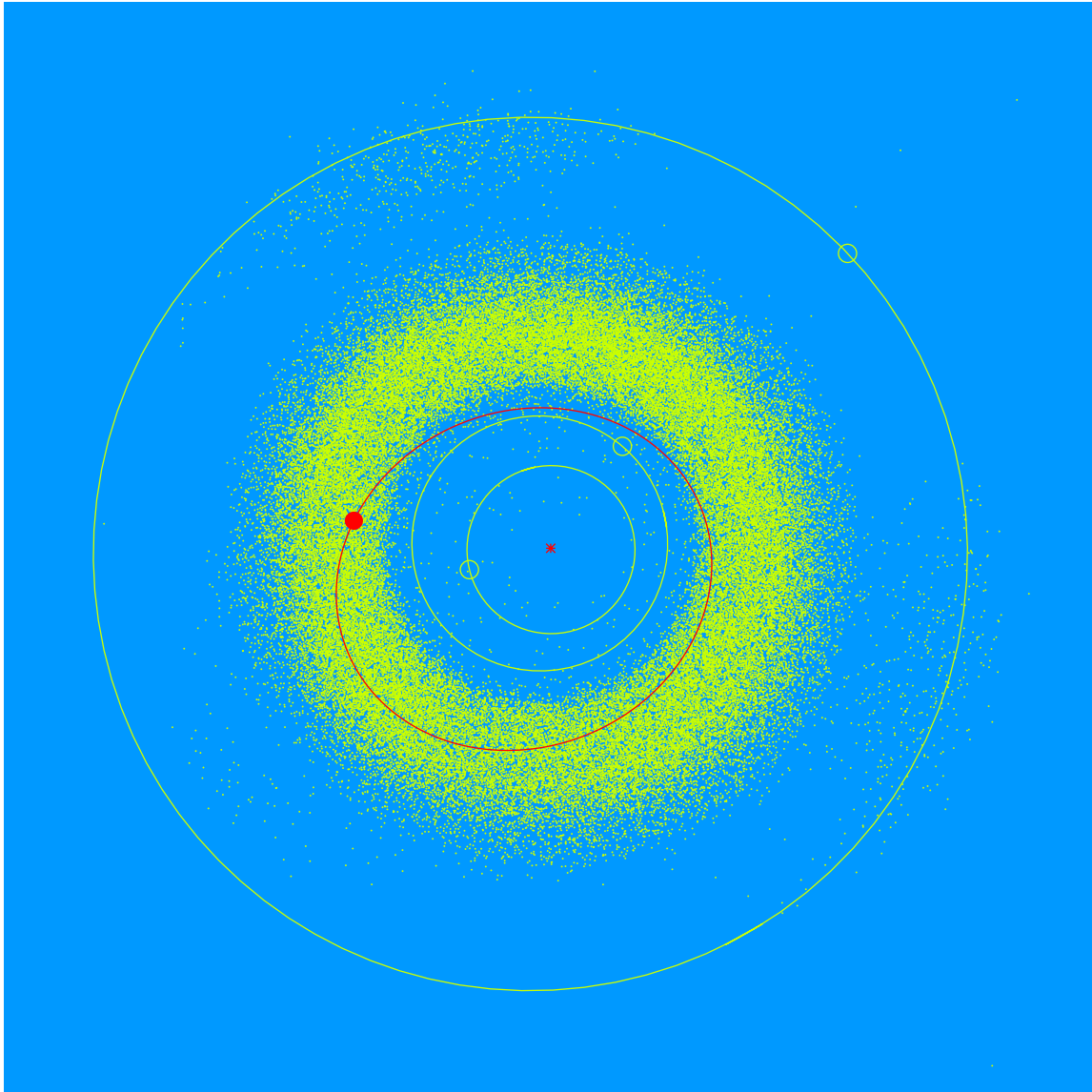


**(27513) Mishapipe = 2000 GY<sub>169</sub>**

Discovered 2000 Apr. 04 by the Lowell Observatory Near-Earth Object Search at the Anderson Mesa Station.

Misha Pipe (b. 1990) is an Educator in Lowell Observatory's Native American Astronomy Outreach Program. She uses her talent in relating to children in partnerships with teachers to get kids excited about science. She also designs hands-on activities and organizes summer and winter camps.



Semimajor axis	2.29 AU
Eccentricity	0.220
Inclination	27.22 deg
Diameter	2–3 km