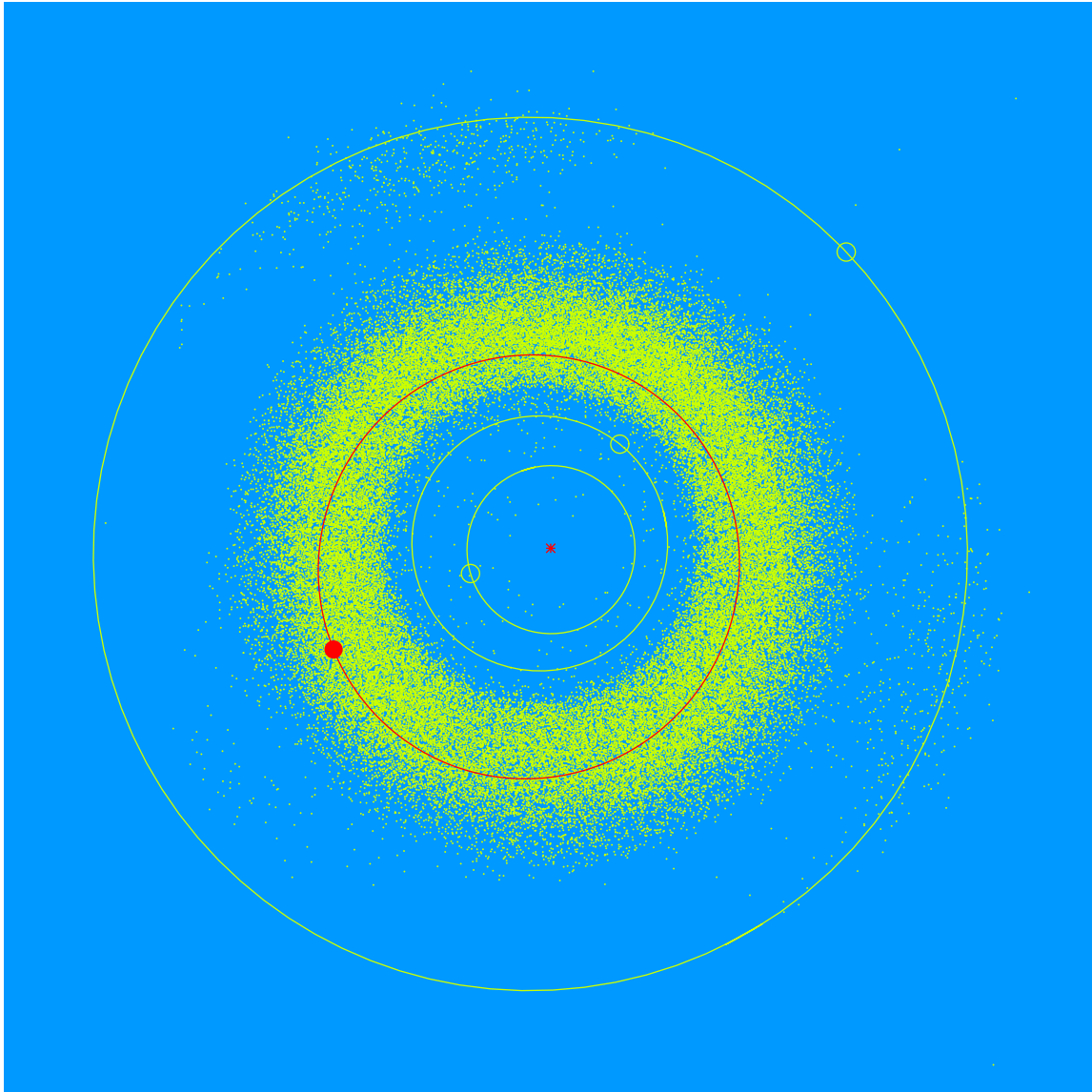


(27507) Travisbrown = 2000 GS₁₄₁

Discovered 2000 Apr. 07 by the Lowell Observatory Near-Earth Object Search at the Anderson Mesa Station.

Travis Brown (b. 1989) is an Educator in Lowell Observatory's Native American Astronomy Outreach Program. He brings his enthusiasm and energy to partnerships with teachers to get kids excited about science. He enjoys introducing the students to rocketry and robots.



Semimajor axis	2.54 AU
Eccentricity	0.137
Inclination	8.60 deg
Diameter	2–3 km