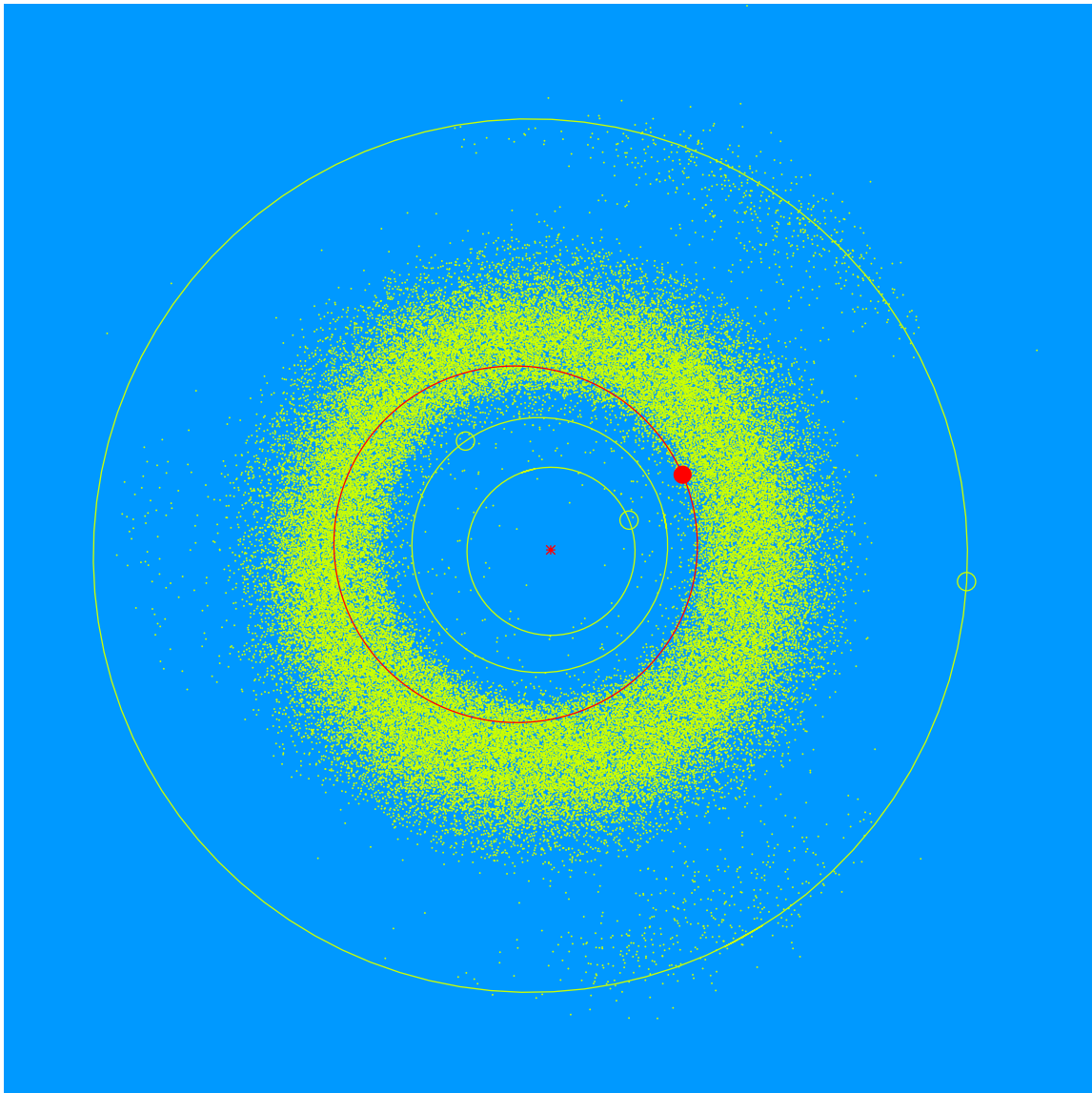


**(27089) Heidilarsen = 1998 TD<sub>33</sub>**

Discovered 1998 Oct. 14 by the Lowell Observatory Near-Earth Object Search at the Anderson Mesa Station.

Heidi Larson (b. 1986) is the Telescope Support Specialist at Lowell Observatory. She plays a major role in maintaining the performance of the Navy Precision Optical Interferometer. During her time at Lowell, she has filled roles as a Telescope Operator at the Lowell Discovery Telescope as well as in the public programs engaging with visitors.



Semimajor axis	2.16 AU
Eccentricity	0.195
Inclination	2.67 deg
Diameter	1-2 km